

US leader is asked to help Kelly

DOVER teenager Kelly Turner could be a step closer to potentially life saving treatment in the USA after Donald Trump has been called upon to donate to her fund.

Doctors gave the St Edmund's pupil two years to live when she was diagnosed with a desmoplastic small round cell tumour – a rare and aggressive form of cancer – at the age of 16 in October 2015.

After the NHS refused to carry out surgery, the St Edmund's pupil's family found a willing facility in New York – but at a cost of more than £1 million.

After a request from Kelly's dad, Dover and Deal MP Charlie Elphicke has written to President Trump asking him for support.

As it stands, Kelly has reached 51 per cent of her £1 million target.

Kelly's dad Martin Turner said he came up with the "mad idea" with his colleagues working nightshifts on the Dover Docks.

He said: "I don't think I'm being unkind to say that President Trump doesn't have particularly good press in the UK.

"And he is New Yorker who grew up only a few miles from where Kelly is having surgery. He is also wealthy with considerable influence.

"Even if it doesn't work, I want to thank everyone in the community who has helped so far."

Controversial restriction to be replaced by new variable system Removal of 40mph limit pushed back to summer



JAMMED: The speed limit was originally brought in to tackle gridlock

By Ben Ashton
ben.ashton@kentlive.news

HIGHWAYS England has confirmed when it will scrap the 40mph speed limit on the A20 between the Roundhill Tunnel in

Folkestone and Aycliffe in Dover. The government body originally pledged to install a variable speed limit on the busy A-road by March 2017 but it emerged in January the plan had been delayed until June, which had left

Dover MP Charlie Elphicke extremely disappointed.

He said: "Last Autumn, Highways England said they would have this absurd speed limit gone by March. Now they say it won't be gone until June.

"Yet again they show they are not fit for purpose and have failed to get on with the job. It's wrong they continue to subject local people to yet more delays."

Recent rumours suggested there could be yet another setback as drivers have been forced to persist with sluggish speeds since the limit was introduced almost two years ago in April 2015.

However, Highways England has now reassured motorists by confirming it is still on course with plans to have work finished by June 2017.

Information

A Highways England spokesman said: "This work is on target to be completed in June. An update is due to be issued with the latest information on the work in around a month – late-April to early-May."

The body said the update will provide "further details" on the work and a "more thorough" update as to where it is with the proposals.

The introduction of a variable speed limit will see new signs on the coastbound carriageway, which switch from the national speed limit to 40mph during TAP (Traffic Assessment Protocol) to help cut congestion.

This would allow motorists to drive at the national speed limit, apart from at exceptionally busy times when TAP is active, reducing the speed limit to 40mph to help reduce queuing traffic.

■ WHY WAS A 40MPH SPEED LIMIT IMPOSED IN THE FIRST PLACE?

The speed limit, alongside Dover TAP, was brought in to tackle gridlock leading up to the Port of Dover and has been permanent, meaning motorists have to drive at 40mph, even when there is little



HEAVY TRAFFIC: The A20 near to Capel



DISAPPOINTED: Dover MP Charlie Elphicke.

to no traffic.

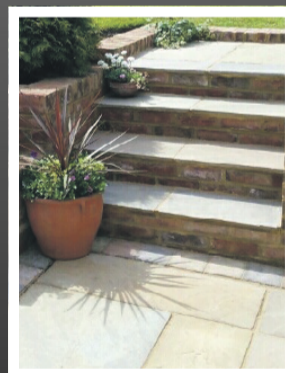
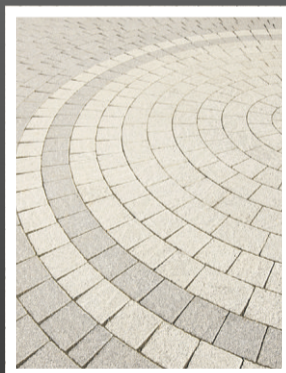
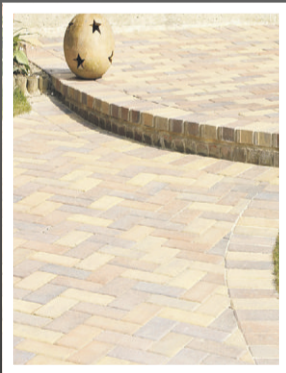
A hefty number of drivers have been caught out by the speed limit – 180 speeding offences were committed in the first seven days of the scheme, according to Kent Police.

■ WHY CAN'T I DRIVE AT THE NATIONAL SPEED LIMIT ALL THE TIME?

You can after June if plans remain on track, except when Dover TAP is imposed. At that point the speed limit will change to 40mph. Bear in mind, Dover TAP was used 200 times in 2016.

■ WHY NOT GET RID OF DOVER TAP?

Cllr Nigel Collor, DDC Cabinet Member for Access said: "We still need to have Dover TAP for when there are problems, especially with the volume of traffic using the Port of Dover increasing."



- All types of Paving (driveways, patios, pathways)
- Full driveway & dropped kerbs packages
 - Dropped Kerbs
- Bricklaying & Retaining Walls
 - Tarmac & Concrete
- All types of groundworks including foundations, drainage, etc.

T: 01303 253437

capelgroundworks@btinternet.com

www.capelgroundworks.co.uk



FS 579171

